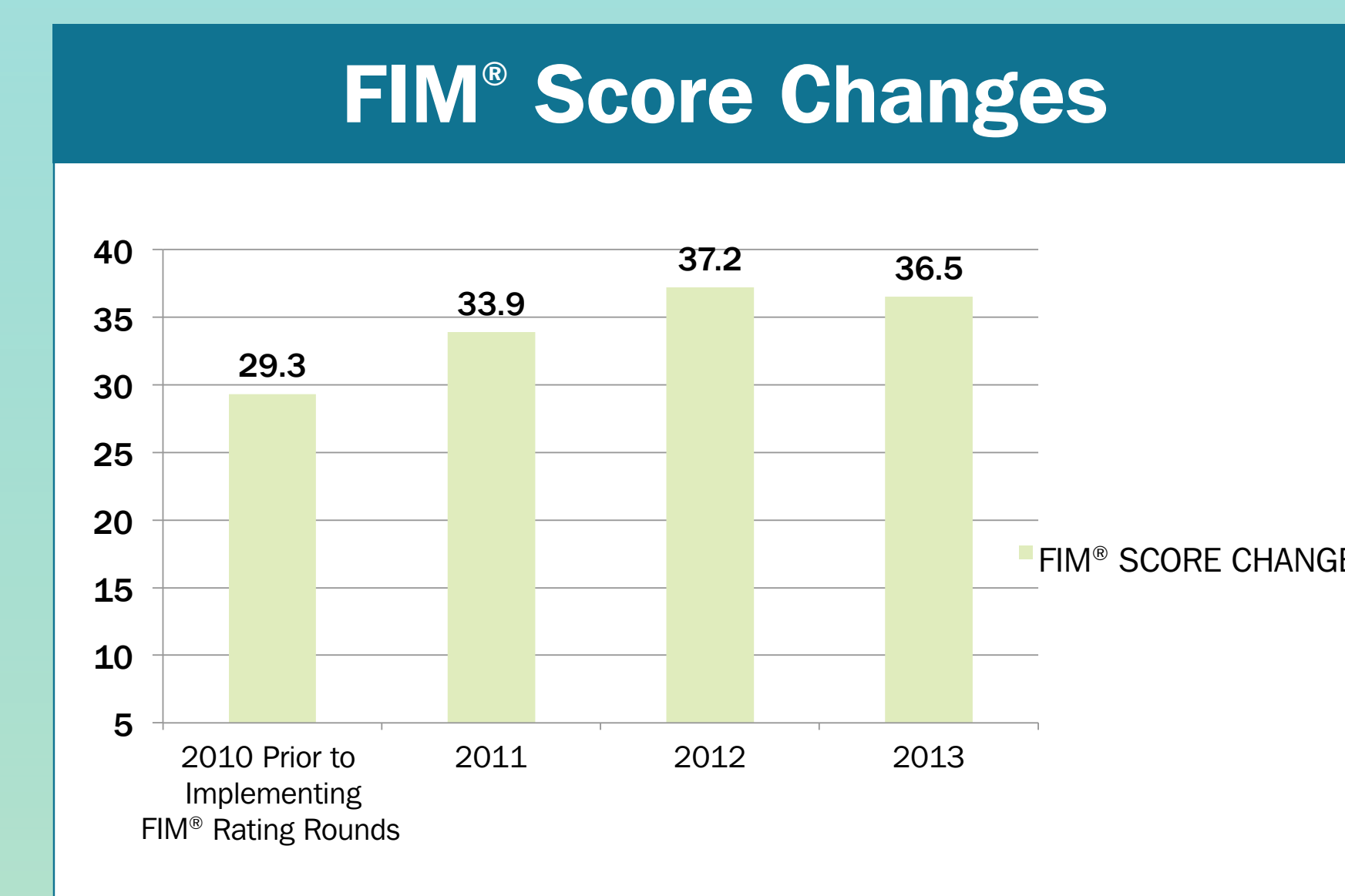
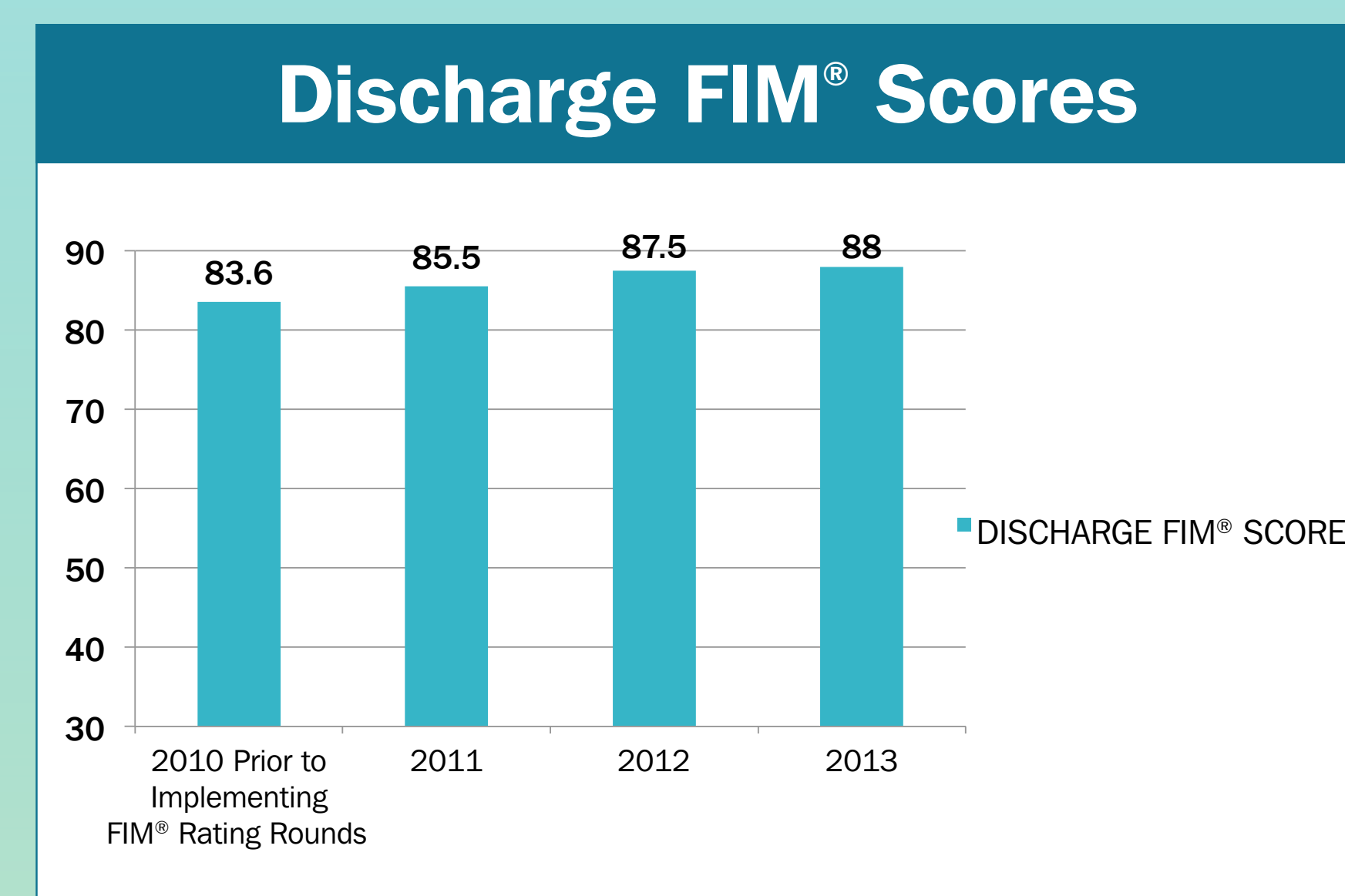
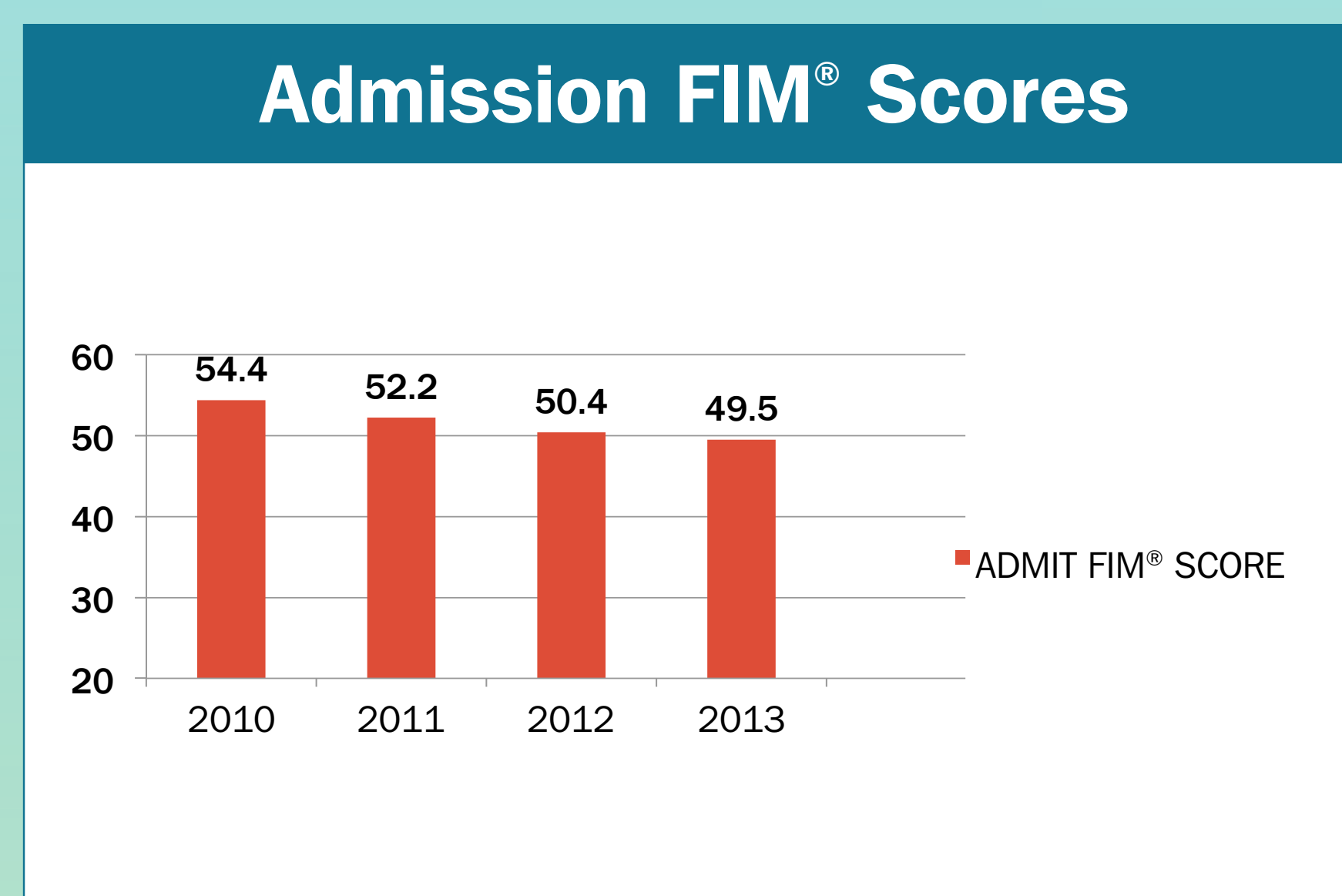
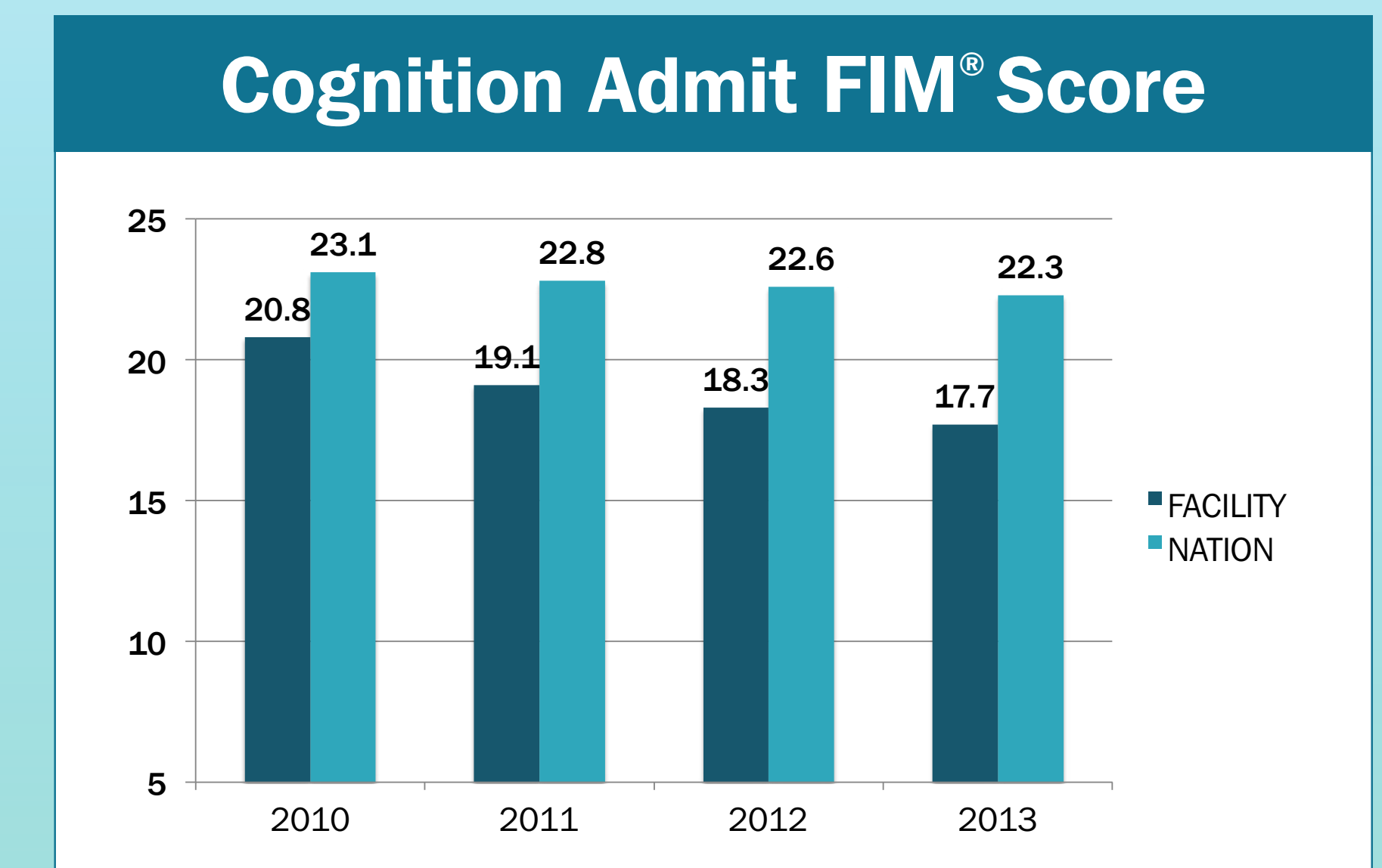
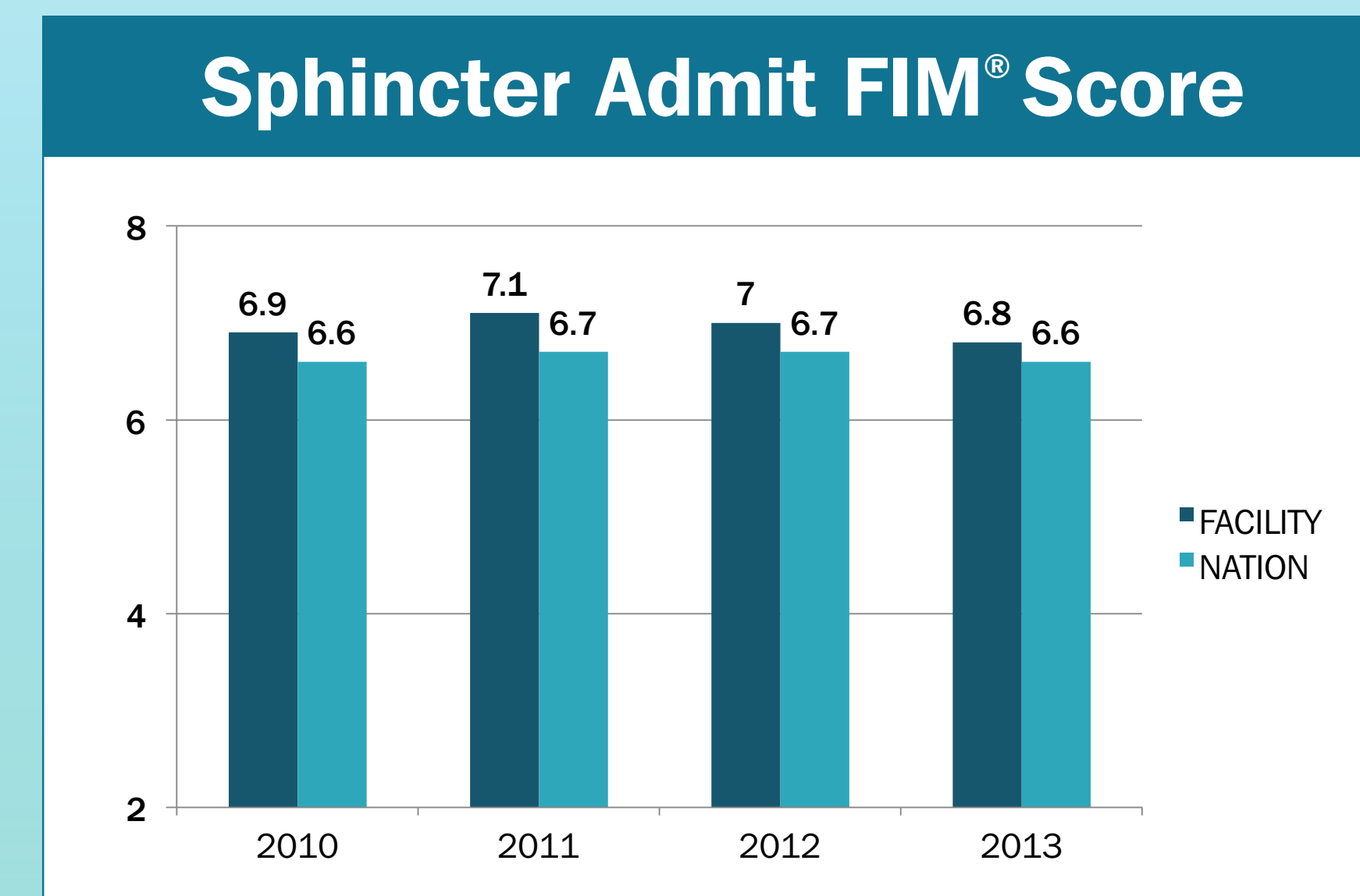
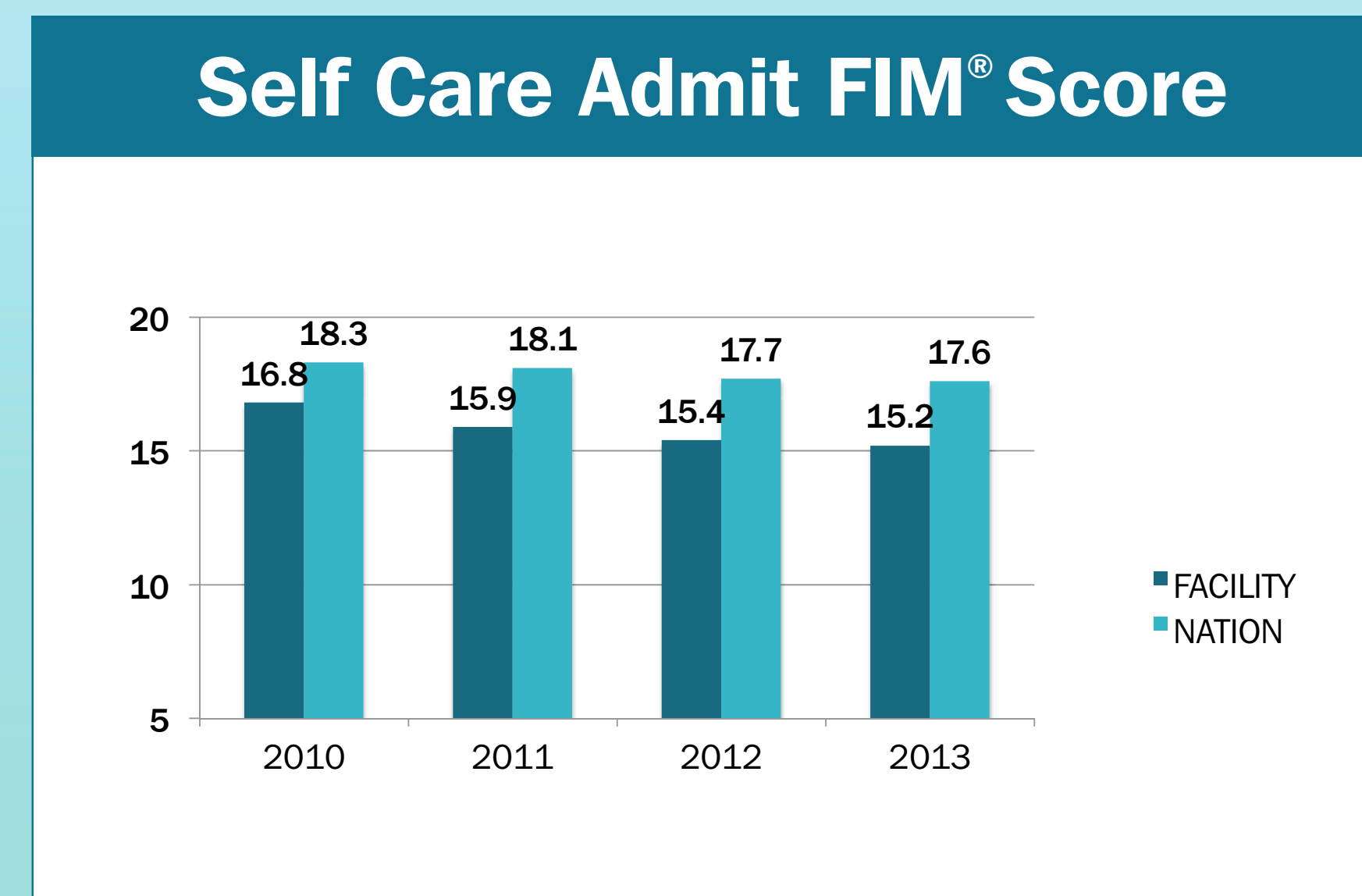
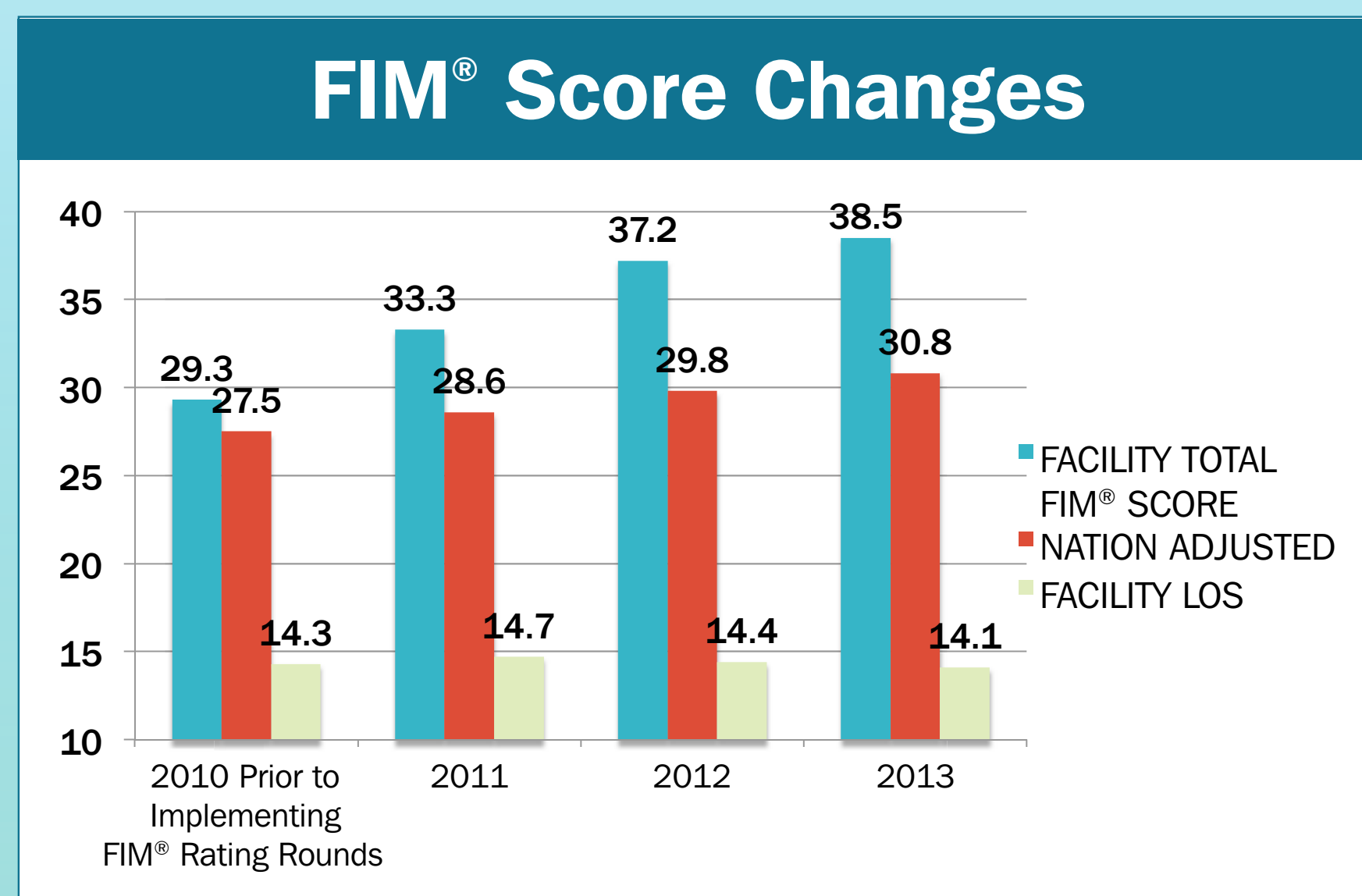
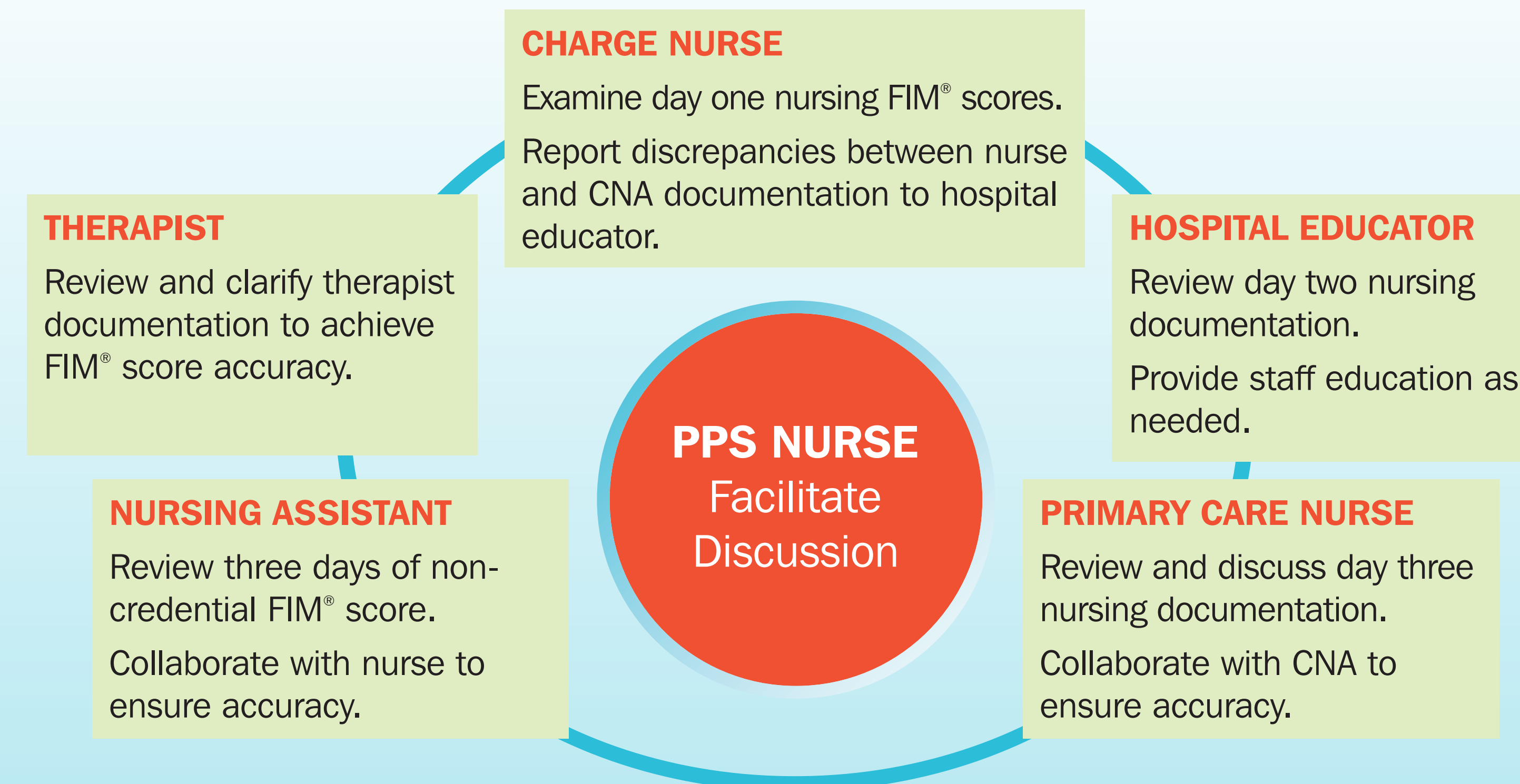




## Introduction

- Assessment of functional status is a major duty for clinicians practicing in rehabilitation facilities.
- FIM® rating rounds are done daily, seven days a week by clinicians caring for the patient being reviewed.
- FIM® rating rounds are done on day three of patient admission date.
- This process focuses on admission FIM® scores.
- The purpose of admission FIM® rating rounds is to capture the true burden of care.
- The lower the admission FIM® score, the greater the burden of care.
- The goal is to maximize the patients' functional independence.
- Confirm and validate that the documentation supports the burden of care reflected in the admission and discharge FIM® score.

## Team Members and Responsibilities



## Conclusion

Since the implementation of FIM® rating rounds:

1. FIM® score changes and patient outcome has improved.
2. Patients length of stay has decreased.
3. Clinicians have a better knowledge of accurately scoring FIM® components.

## References

Center for Disease and Medicare Services. (2012) The inpatient rehabilitation facility patient assessment (IRF) training manual. Retrieved March 28, 2013, from [www.cms.gov/...Fee.../InpatientRehabFacPPS.../IRFPAI-manual-2012.pdf](http://www.cms.gov/...Fee.../InpatientRehabFacPPS.../IRFPAI-manual-2012.pdf)

Dodds, T. A., Martin, D. P., Stolov, W. C., & Deyo, R. A. (1993). A validation of the Functional Independence Measurement and its performance among rehabilitation inpatients. *Archives of Physical Medicine and Rehabilitation*, 74(5), 531-536.